

# Parts Catalogue

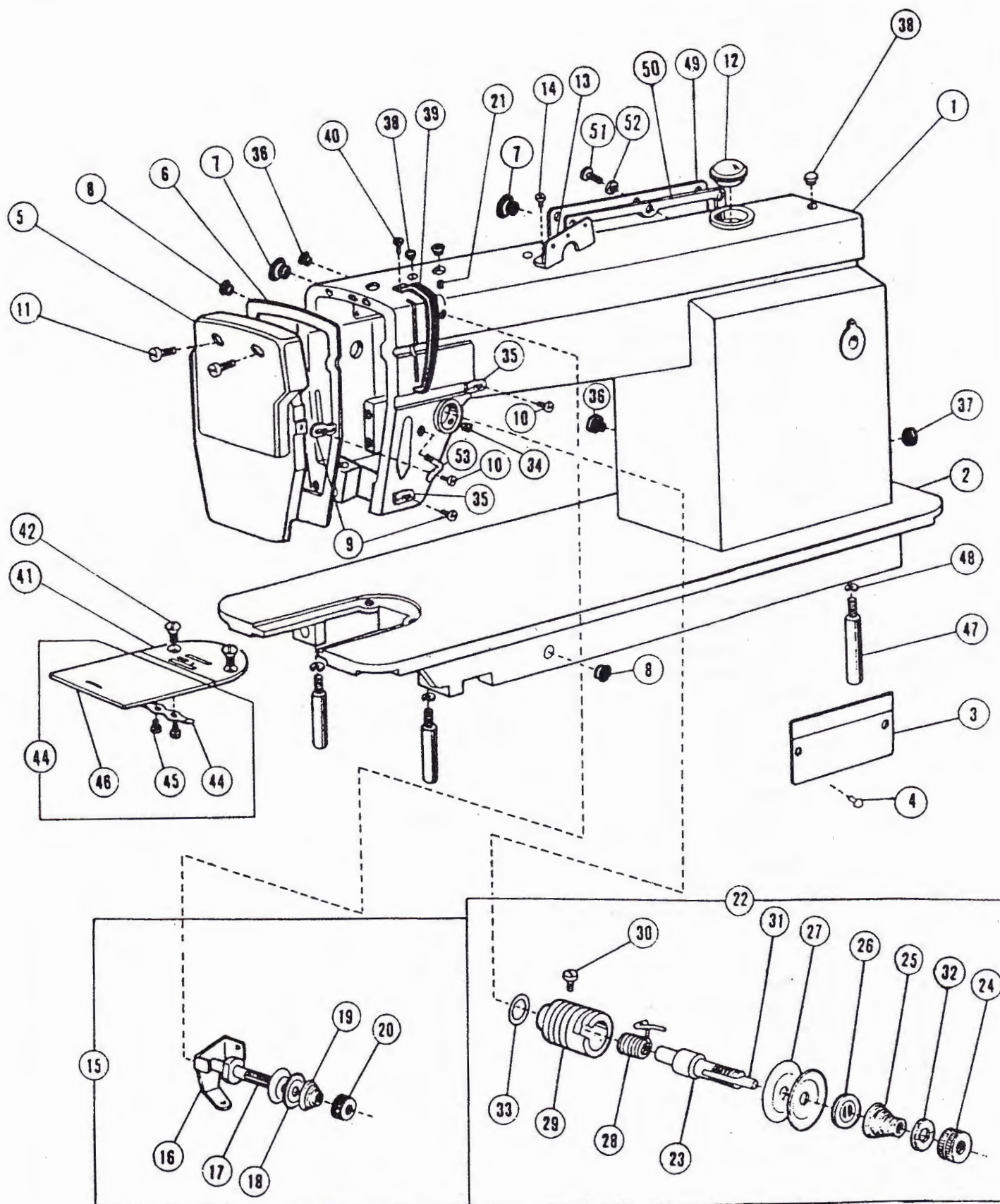
*T111-155*

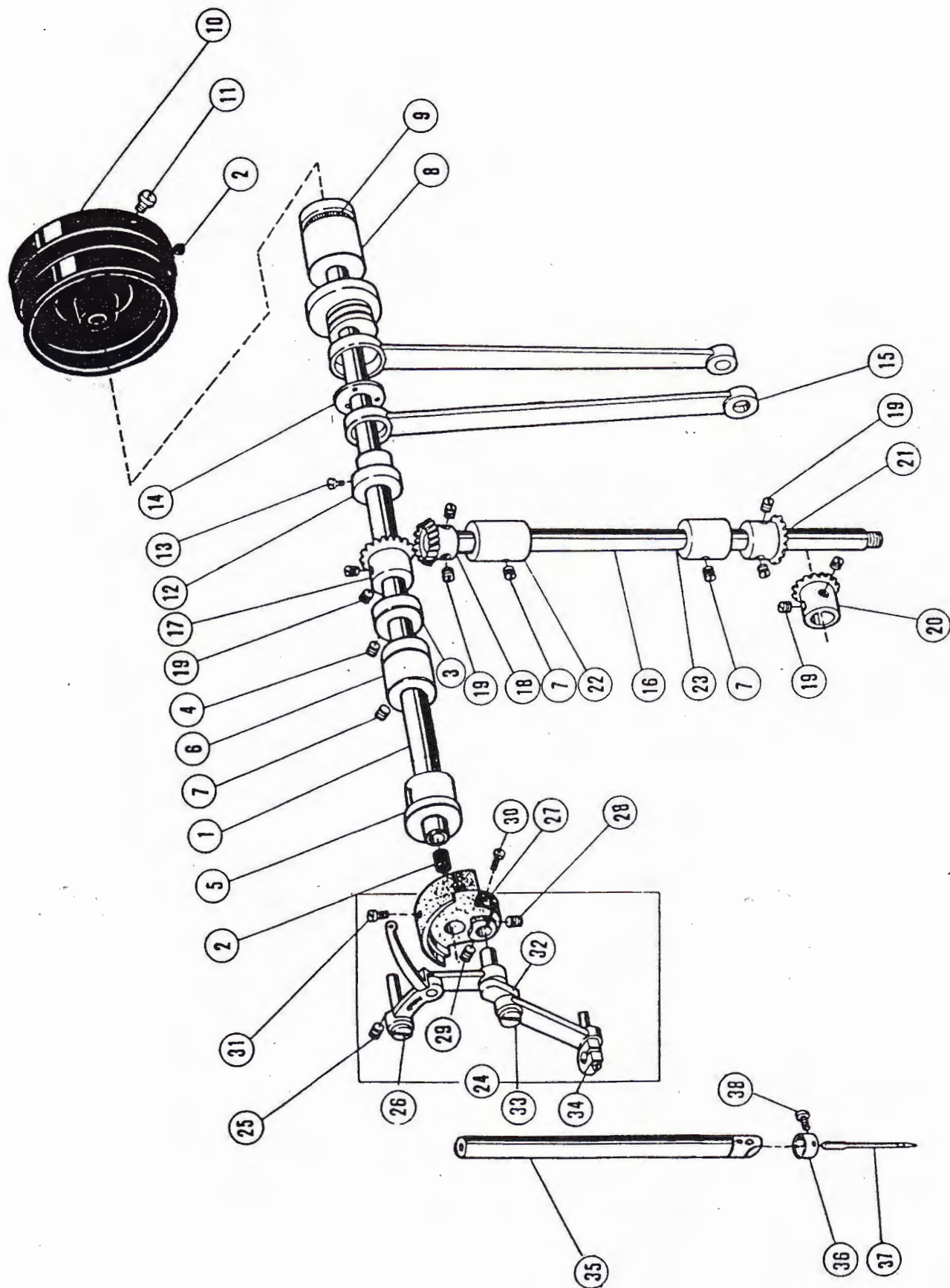
# 1. Machine Arm And Bed

No.	Name	Qt.
1	Arm	1
2	Bed	1
3	Trade mark	1
4	Rivet	2
5	Face plate	1
6	Gasket for face plate	1
7	Rubber plug (Φ19)	3
8	Rubber plug	1
	Rubber plug	1
9	Thread finger	1
10	Screw	3
11	Screw	2
12	Oil screen complete	1
13	Three-eye finger	1
14	Screw	1
15	Thread tension complete	1
16	Thread pass-by plate	1
17	Screw	1
18	Tension disc	2
19	Spring	1
20	Nut	1
21	Set screw	1
22	Thread tension complete	1
23	Screw	1
24	Nut	1
25	Spring	1
26	Thread releasing plate	1
27	Thread tension disc	2
28	Thread take-up spring	1
29	Thread tension adjusting bracket	1
30	Screw	1
31	Thread releasing pin	1
32	Stopping plate	1
33	O-type ring	1
34	Set screw	1
35	Thread finger	2
36	Rubber plug (Φ8.8)	2
37	Rubber plug (Φ27)	1
38	Rubber plug (Φ5.7)	2
39	Thread take-up lever guard	1
40	Screw	1
41	Throat plate	1
42	Screw	2
43	Sliding plate complete	1
44	Spring	1
45	Screw	2
46	Sliding plate	1
47	Bed leg	3
48	Washer	3
49	Back side cover complete	1
50	Seal gasket	1
51	Screw	7
52	Washer	7
53	Thread finger	1

From the library of: Superior Sewing Machine & Supply LLC

1

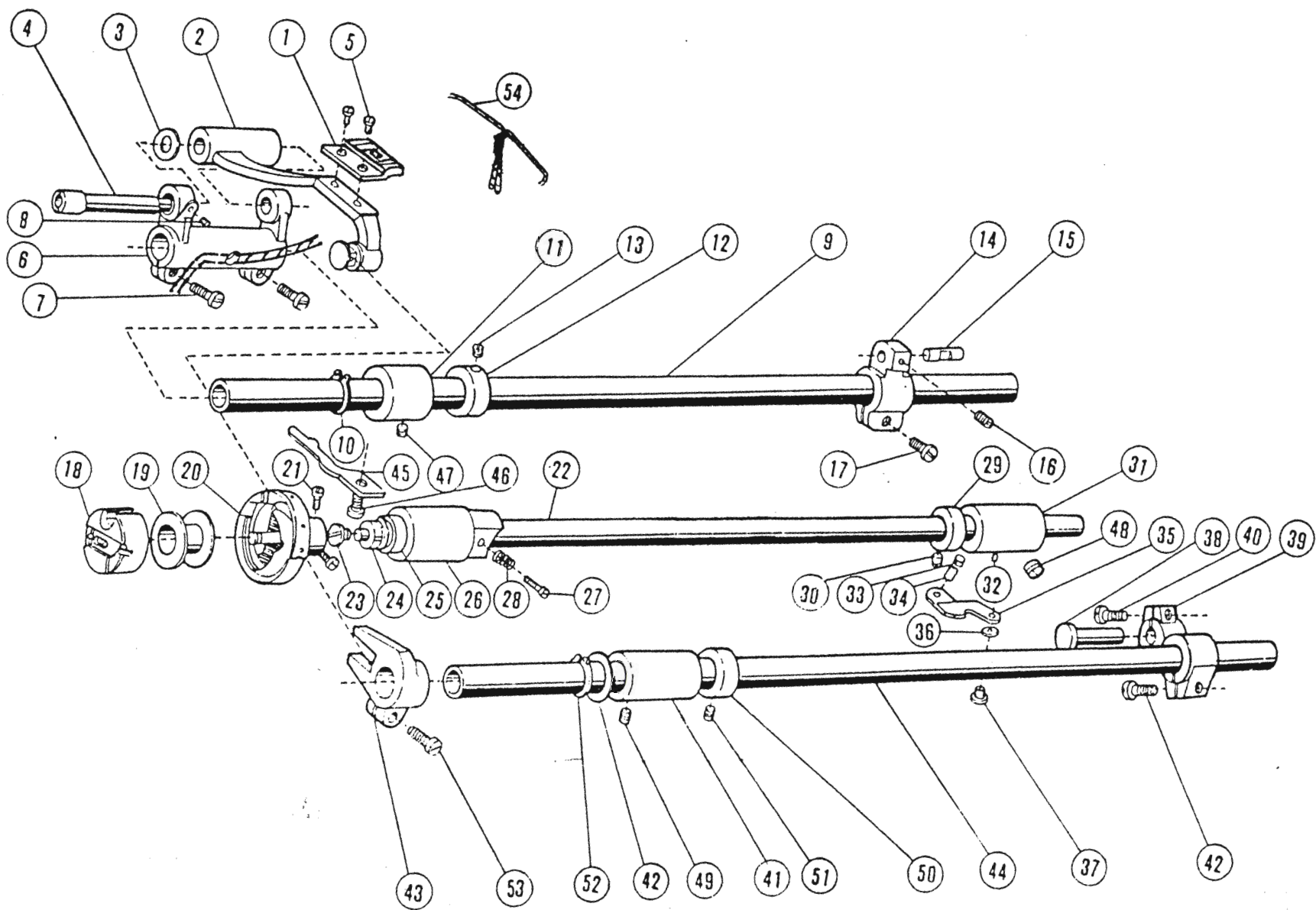




## 2. Arm And Vertical Shafts, Needle bar Thread Take-up Parts

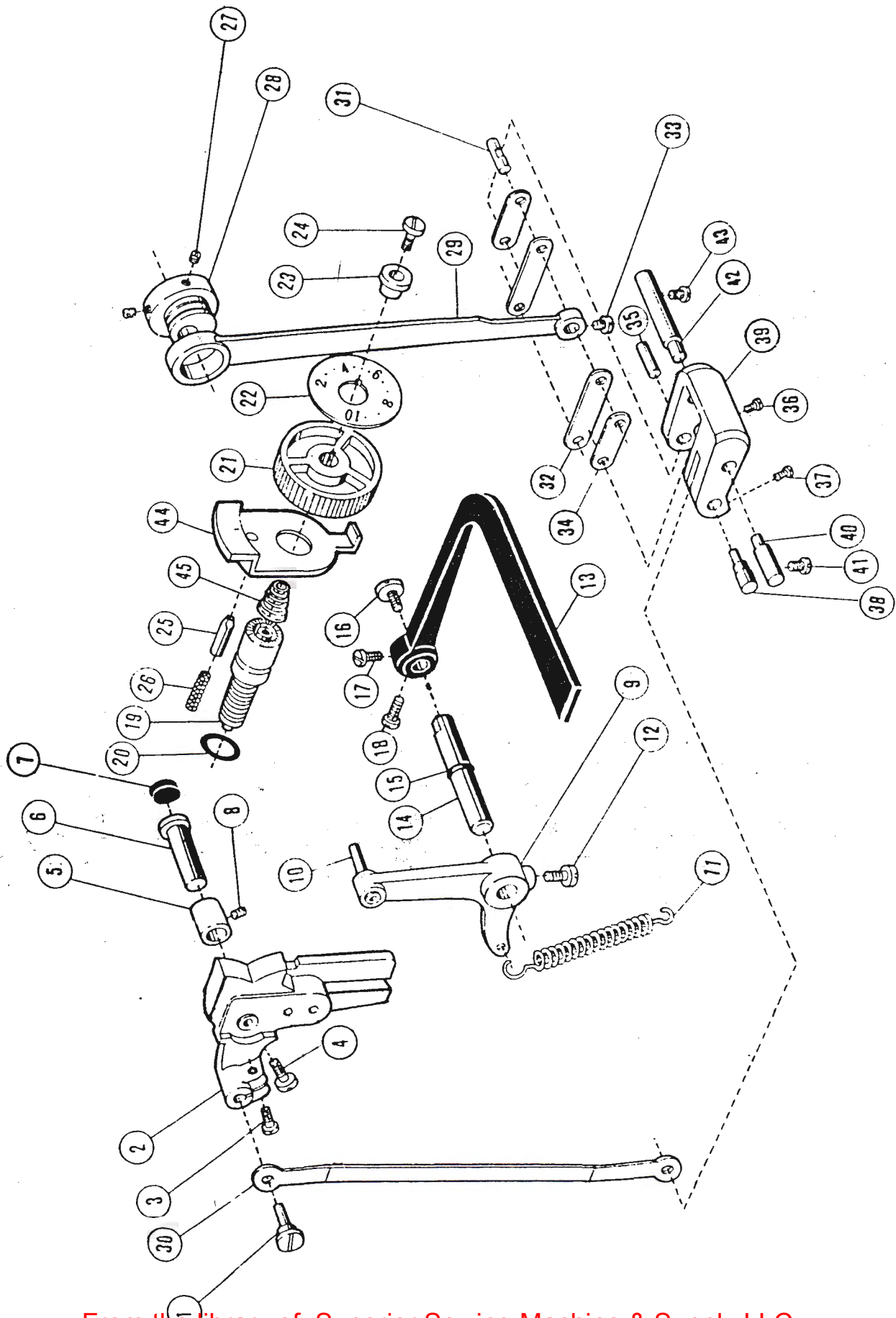
No.	Name	Qt.
1	Arm shaft	1
2	Rubber plug $\Phi 7.4 \sim 10$	2
3	Collar	1
4	Screw	2
5	Front bushing	1
6	Middle bushing	1
7	Screw	3
8	Rear bushing	1
9	Oil seal complete	1
10	Balance wheel	1
11	Screw	2
12	Feed dog lift cam	1
13	Screw	3
14	Seperating piece for cam	1
15	Link	1
16	Vertical shaft	1
17	Bevel gear	1
18	Vertical shaft bevel gear(upper)	1
19	Screw	8
20	Rock shaft bevel gear	1
21	Vertical shaft bevel gear(lower)	1
22	Vertical shaft bushing(upper) complete	1
23	Vterical shaft bushing(lower) complete	1
24	Thread take-up lever complete	1
25	Screw	1
26	Hinge pin	1
27	Needle bar crank	1
28	Screw	1
29	Set screw	1
30	Screw	1
31	Set screw	1
32	Thread take-up crank	1
33	Screw	1
34	Needle bar adaptor	1
35	Needle bar	1
36	Thread finger	1
37	Needle	1
38	Screw	1





### 3.Feed Dog Lift And Feed And Thread Looping

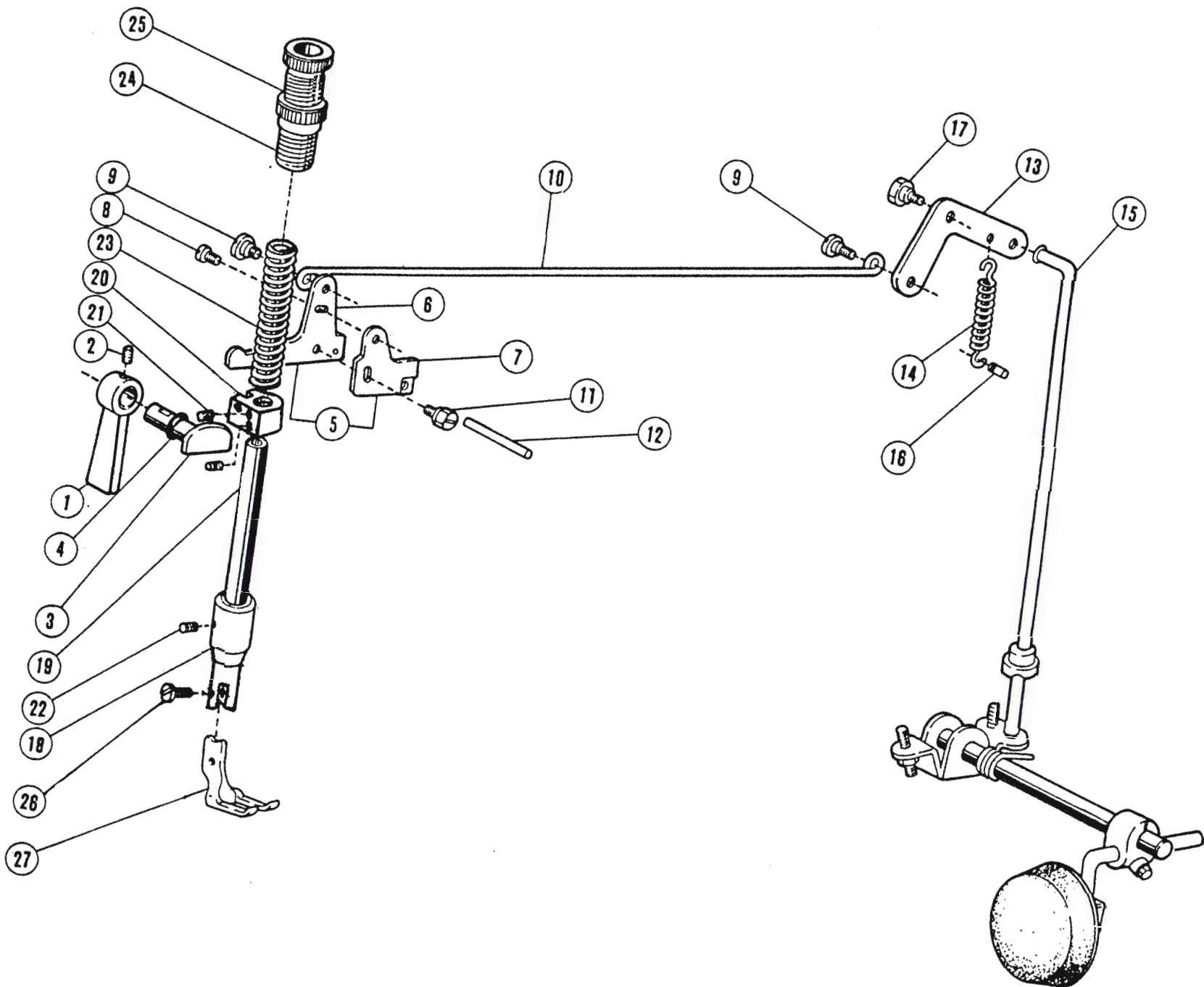
No.	Name	Qt.
1	Feed dog	1
2	Feed dog support complete	1
3	Washer	1
4	Eccentric shaft	1
5	Screw	1
6	Feed dog support crank	2
7	Screw	1
8	Screw	2
9	Feed shaft	1
10	Stop ring	1
11	Bushing	1
12	Collar	1
13	Screw	1
14	Feed shaft rear crank	2
15	Link pin	1
16	Screw	1
17	Tension screw	1
18	Bobbin case complete	1
19	Bobbin	1
20	Hook complete	1
21	Hook screw	1
22	Rock shaft	3
23	Screw	1
24	Plug	1
25	Oil seal	1
26	Front bushing	1
27	Screw	1
28	Spring	1
29	Collar	1
30	Screw	1
31	Rear bushing	2
32	Oil tube	1
33	Plunge	1
34	Spring	1
35	Stopper	1
36	Washer	1
37	Screw	1
38	Hinge pin	1
39	Feed dog lift rear crank	1
40	Screw	1
41	Feed dog lift shaft front bushing	2
42	Washer	1
43	Feed dog lift fork	1
44	Feed dog lift shaft	1
45	Hook set bracket	1
46	Screw	1
47	Screw	1
48	Screw	1
49	Screw	1
50	Collar	1
51	Screw	1
52	Stop ring	1
53	Screw	1
54	Oil wick	1





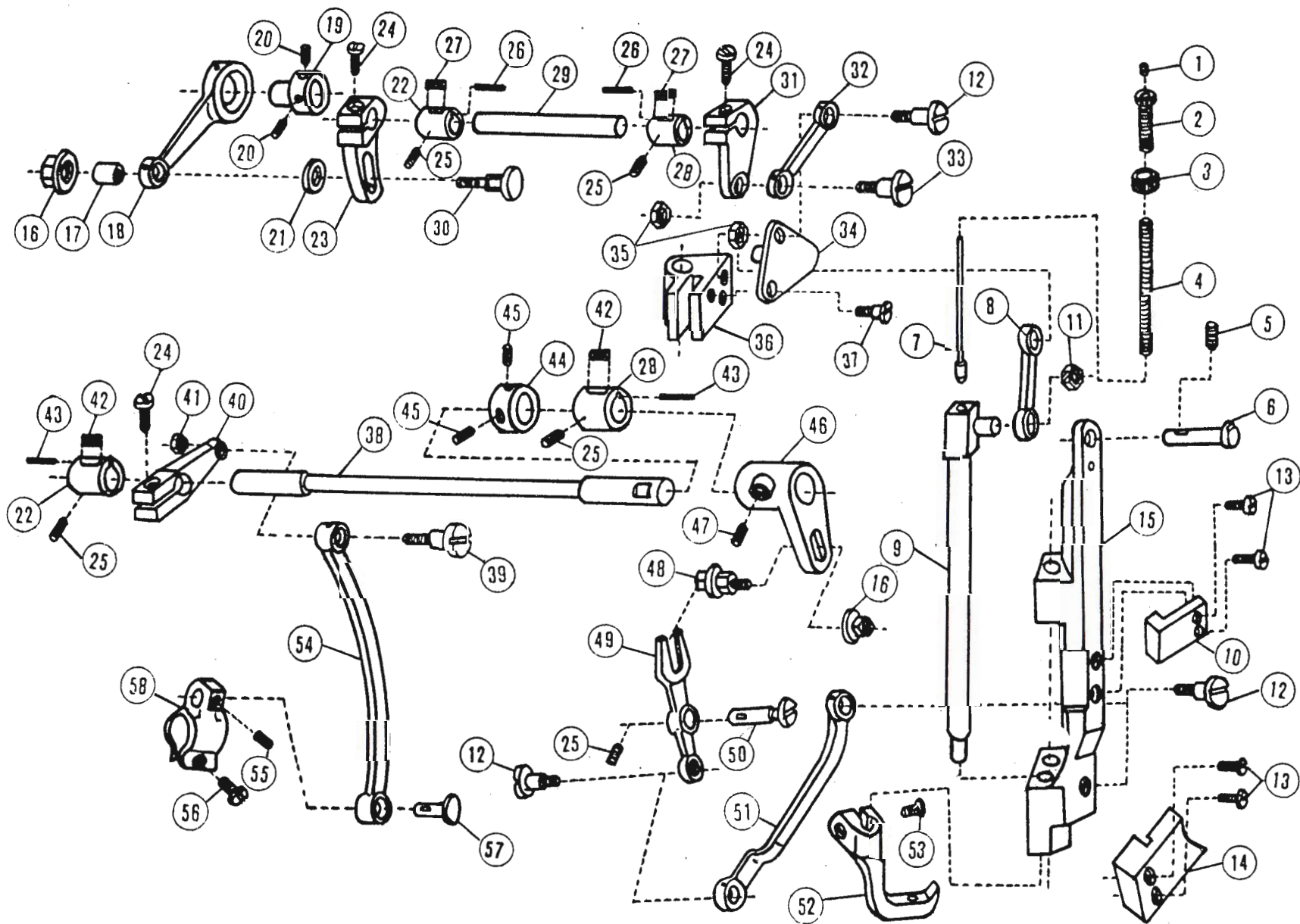
#### 4.Feed Mechanism

No.	Name	Qt.
1	Link pin	1
2	Stitch length bracket	1
3	Screw	1
4	Screw	1
5	Bushing	1
6	Shaft for stitch length bracket	1
7	Rubber plug	1
8	Set screw	1
9	Reverse feed lever crank	1
10	Shaft for block	1
11	Spring	1
12	Screw	1
13	Reverse feed lever	1
14	Pin shaft	1
15	O-type ring	1
16	Tension screew	1
17	Set screw	1
18	Screw	1
19	Screw bolt for stitch length	1
20	O-type rubber ring	1
21	Dial cup	1
22	Dial face	1
23	Screw bushing	1
24	Screw	1
25	Stop pin	1
26	SDpring	1
27	Screw	3
28	Feed cam	1
29	Feed link	1
30	Stitch adjusting link	1
31	Pin	1
32	Link	2
33	Screw	1
34	Link	2
35	Pin for link	1
36	Screw	1
37	Screw	1
38	Link eccentric shaft	1
39	Stitch lenbgth adjusting crank	1
40	Set pin (left)	1
41	Screw	1
42	Set pin(right)	1
43	Screw	1
44	Push lever	1
45	Spring	1



## 5.Presser Foot

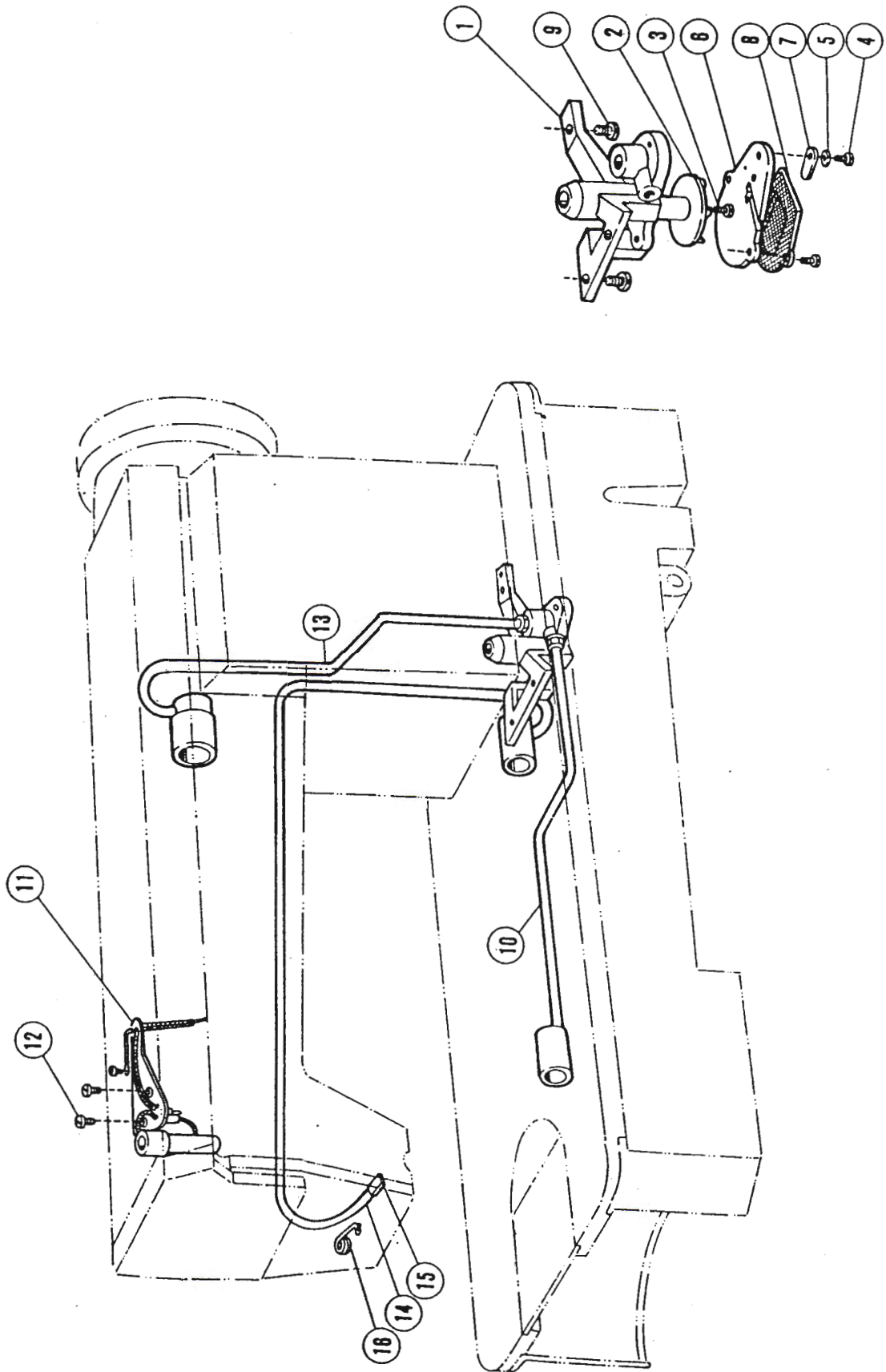
No.	Name	Qt.
1	Presser foot lift bar	1
2	Screw	1
3	Presser bar lift cam	1
4	Oil seal	1
5	Knee lifter lever(left) complete	1
6	Lever(left)	1
7	Thread releasing cam	1
8	Screw	1
9	Screw	2
10	Knee lifter drawing bar	1
11	Screw	2
12	Thread releasing lever	1
13	Knee lifter lever(right)	1
14	Spring	1
15	Connecting rod	1
16	Pin	1
17	Screw	1
18	Bushing for presser bar	1
19	Presser bar	1
20	Position block for presser bar	1
21	Screw	2
22	Screw	1
23	Spring	1
24	Screw	1
25	Nut	1
26	Screw	1
27	Presser foot	1



## 6.Upper Feed Parts

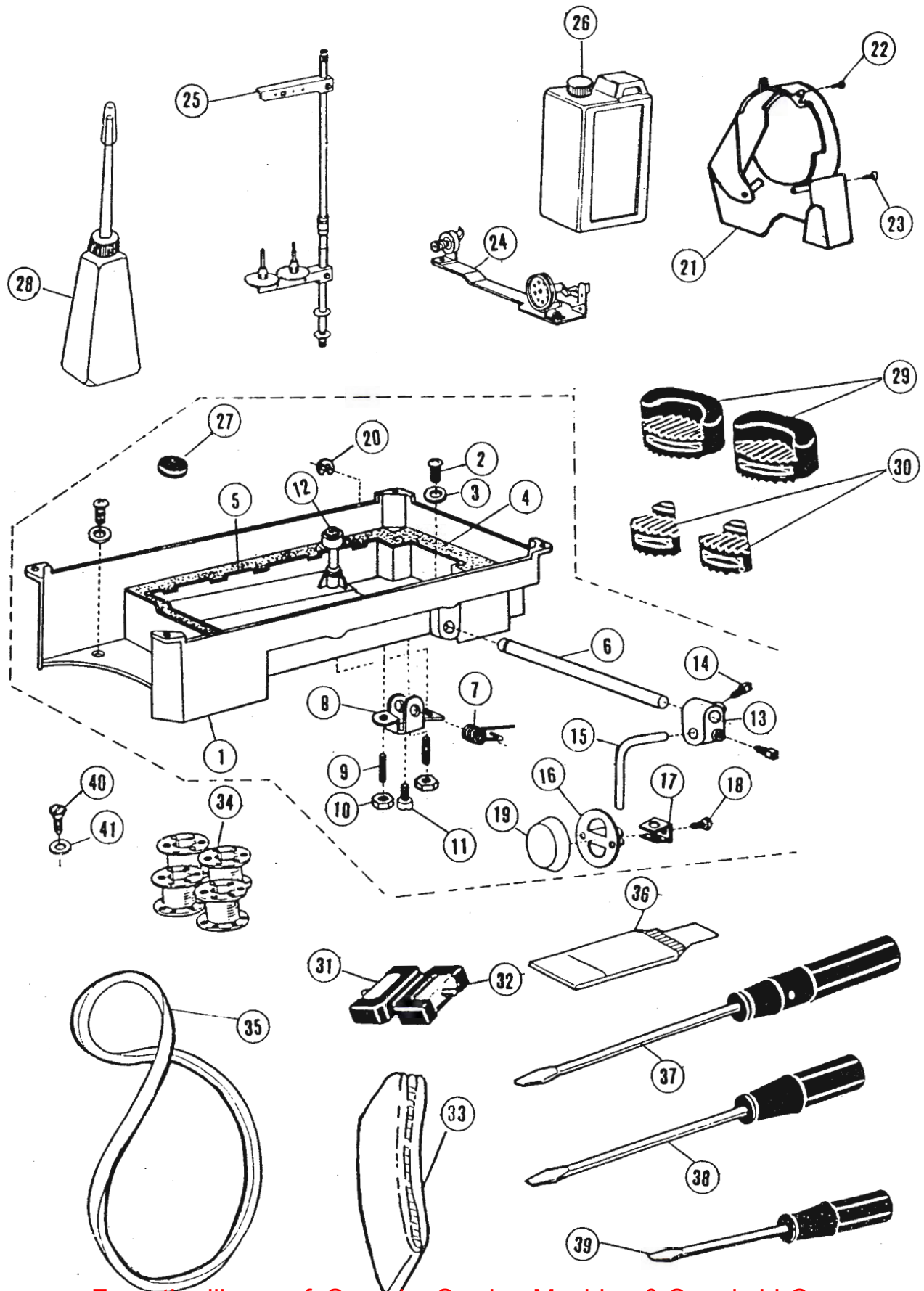
No.	Name	Qt.
1	Oil felt	1
2	Screw	1
3	Nut	1
4	Spring	1
5	Screw	1
6	Shaft for needle bar motion bracket	1
7	Reel for spring	1
8	Link	1
9	Adapor	1
10	Slot for sliding block	1
11	Sliding block	1
12	Screw	3
13	Screw	4
14	Guide rail	1
15	Needle bar motion bracket	1
16	Nut	2
17	Washer	1
18	Link for eccentric	1
19	Presser foot lift eccentric	1
20	Screw	2
21	Washer	1
22	Rear bushing	2
23	Rear crank	1
24	Screw	3
25	Screw	5
26	Cotton rope	2
27	Oil felt	2
28	Front bushing	2
29	Shaft	1
30	Screw	1
31	Front crank	1
32	Link	1
33	Screw	1
34	Plate for presser foot lift	1
35	Nut	2
36	Set block	1
37	Screw	1
38	Needle bar motion shaft	1
39	Screw	1
40	Rear crank	1
41	Nut	1
42	Oil felt	2
43	Cotton rope	2
44	Collar	1
45	Screw	2
46	Front crank	1
47	Screw	1
48	Sliding block complete	1
49	Fork lever	1
50	Pin	1
51	Link	1
52	Follow presser foot	1
53	Screw	1
54	Link	1
55	Screw	1
56	Screw	1
57	Connecting pin	1
58	Feed shaft crank	1





# 7. Oil Pump

No.	Name	Qt.
1	Screw	1
2	Screw	1
3	Screw	1
4	Washer	3
5	Cover for oil pump	1
6	Adjusting plate for oil pump	1
7	Filter complete	1
8	Screw	1
9	Oil pipe complete for lower shaft	1
10	Oil wick set plate complete	1
11	Screw	1
12	Oil pipe complete	2
13	for upper shaft	1
14	Oil return pipe	1
15	Oil felt	1
16	Pipe clamp	1



## 8.Oil Reservoir And Accessories

No.	Name	Qt.
1	Oil reservoir	1
2	Screw	2
3	Washer	2
4	Gasket(small)	1
5	Gasket(big)	1
6	Hinge pin	1
7	Spring	1
8	Knee lifter stop bracket	1
9	Screw	2
10	Nut	2
11	Screw	1
12	Knee lifter prop bar	1
13	Connector	1
14	Screw	2
15	Bent rod	1
16	Bell	1
17	Bell bracket	1
18	Screw	1
19	Pat	1
20	Split stop ring	1
21	Belt guard complete	1
22	Screw	2
23	Screw	2
24	Thread winder complete	1
25	Spool stand complete	1
26	Oil tank	1
27	Magnet	1
28	Oil pot	1
29	CUSHION	2
30	CUSHION	2
31	Hinge	2
32	Rubber coat	2
33	Parts bag	1
34	Bbbin	5
35	V-type belt	1
36	Needle	1Pack
37	Screwdriver(big)	1
38	Screwdriver	1
39	Screwdriver(small)	1
40	Wood screw	2
41	Washer	2

From the library of: Superior Sewing Machine & Supply LLC